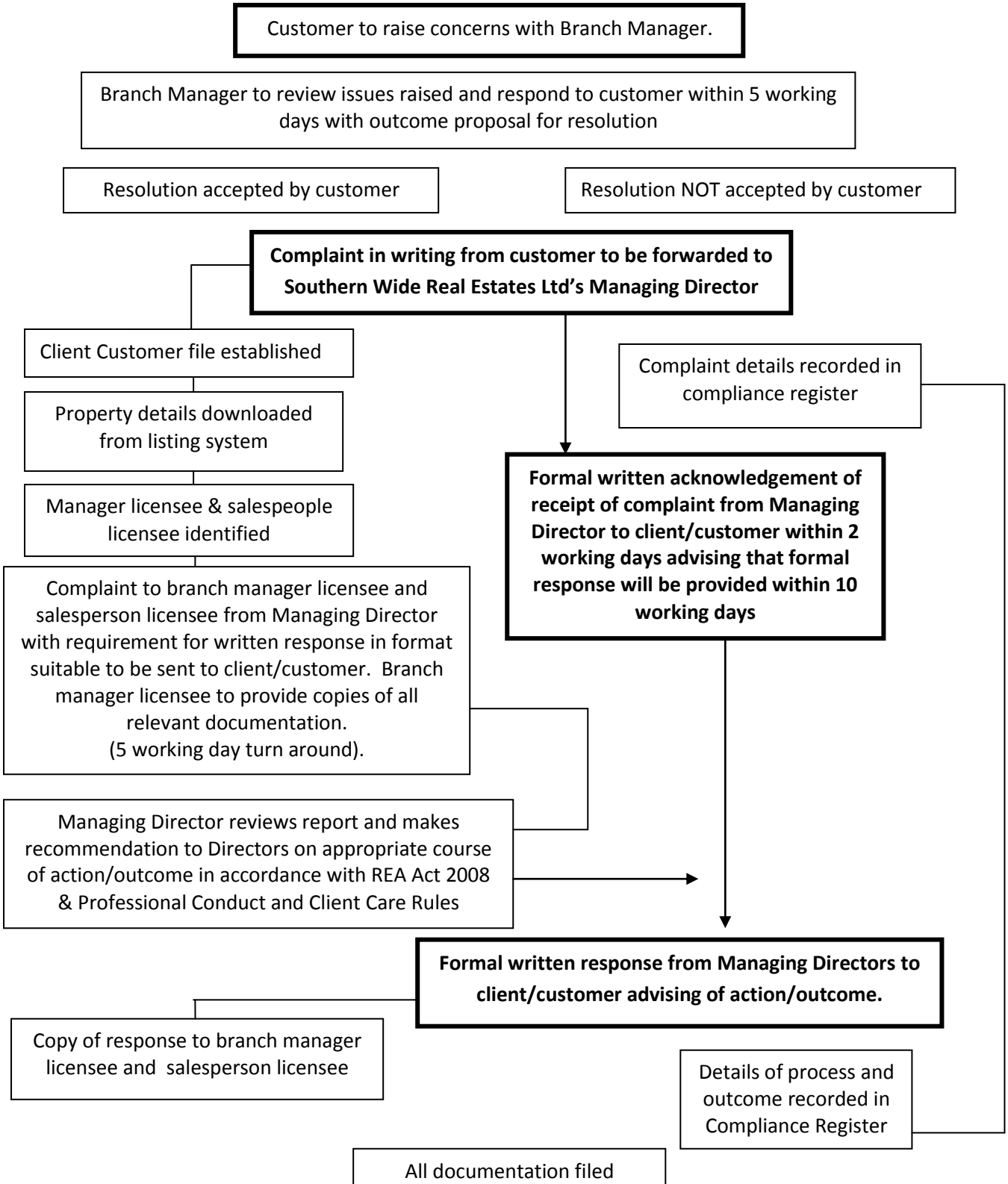


IN-HOUSE COMPLAINT PROCESS

Real Estate Agents Act 2008 – Professional Conduct and Client Care Rules



Note: This process does not preclude the matter from being referred to the Real Estate Agents Authority. The Authority may be contacted at:

The Real Estate Agents Authority.
 C/- PO Box 25-063
 Wellington 6146
www.reaa.govt.nz